



# Coming to the Theatre Visual Story

This visual story will help you know what coming to a Tim Bray Theatre Company show will be like. Check out the story summary for specific details about your show, or book a familiarisation visit to explore the theatre ahead of time.



Your Tim Bray Theatre Company show is at The PumpHouse Theatre.



The theatre is next to Lake Pupuke, home to ducks, geese, and other birds.





There is a café next to the theatre, which is closed on Mondays.



The toilets are in the theatre courtyard. They are open all day.



The theatre has several outdoor spaces you can explore.



You will get your tickets from the box office or bring them from home.





The foyer may get crowded as audience members arrive.



An usher tells you when the theatre is open and helps you find your seat.



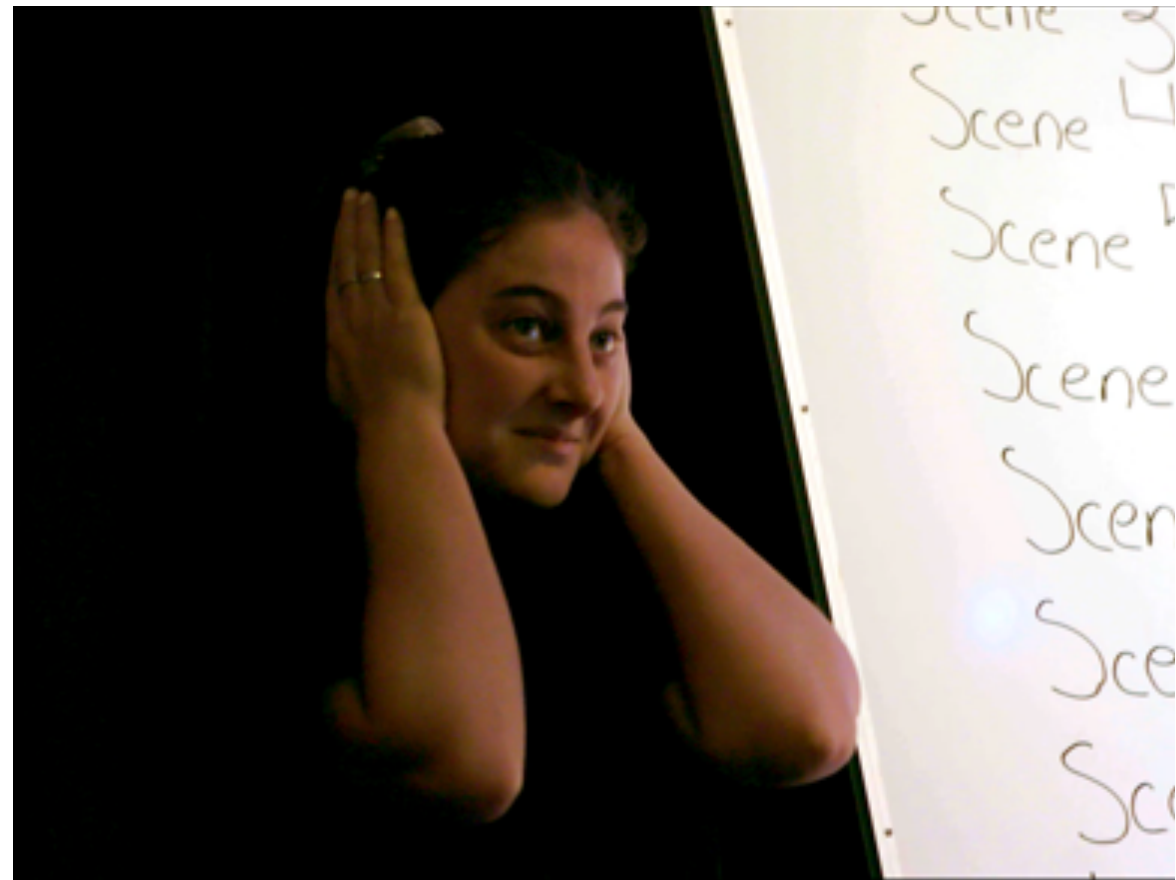
You can sit in your seat, in a beanbag, or on the floor during the show.



The pre-show introduction introduces the actors, set, lights, sound, and surprises.



The Show Guide sits on stage next to the scene list, which matches the show's story summary.



The Show Guide shows you when loud sounds or bright lights will happen.





The set, story, and actors are different for every performance.



The actors will perform on the stage. Only the actors can go on the stage.





The sound will be lowered. You can wear headphones or earmuffs if it's too loud.



Audience lights will be on low during the entire show.



It's ok to laugh, clap, make noise, and move. You can like the show, or not like it.



You can bring a toy, blanket, or other item to help you feel comfortable.





The chill zone in the foyer is for taking breaks during the show.



You can watch a silent live stream of the show on a TV in the chill zone.



When the show is over, the actors will take a bow, and you can clap for them.



And that's what coming to a Tim Bray Theatre Company show is like. See you soon!