



Badjelly

THE WITCH...

By Spike Milligan

**adapted for the stage by Tim Bray
Music and songs by Marshall Smith @
Marshmellow**

Here you will learn about the actors for *Badjelly the Witch*

Find out which character is played by which actor and see a photo of the character. In this show, most actors play several different characters. Not all characters are pictured here, so check out the story summary to see more pictures. Sometimes the actors play a different character than they usually do, if someone is absent. The costumes will be the same every show.

This guide will give you an idea of the people you will see when you come to see the show. This is the main team that you will see; other people will be at the theatre who aren't listed here.

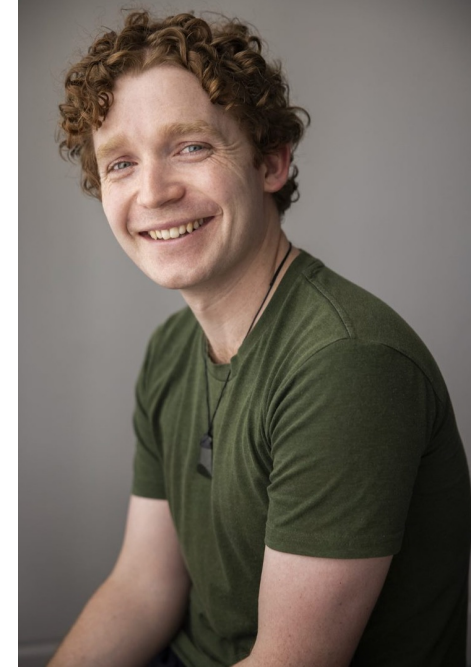
Rose



Lily Edmonds plays Rose. Rose is five years old, smart, and playful.



Tim



Lucas Haugh plays Tim. Tim is six years old, daring, and adventurous.

Binkle-bonk and Dinglemouse



Kat Glass plays Binkle-bonk and Dinglemouse, plus some small characters. Binkle-bonk is a shy and friendly tree goblin. Dinglemouse is a sassy, loud mouse- who used to be a banana!

Mudwiggle and Dulboot



George Maunsell plays Mudwiggle and Dulboot, plus some small characters. Mudwiggle is the strongest worm in all the world. Dulboot is a giant who seems a little dopey, and a little scary, but he's really pretty friendly.

Mummy, Apple Tree, and Badjelly the Witch



Tim Raby plays Mummy, Apple Tree, and Badjelly the Witch, plus some small characters. Mummy is loving and kind, and she loves music. Apple Tree is very sad, and he often cries. Badjelly the Witch is wicked, but also a little silly.

Supporting Cast

The rest of the cast all play many small characters during the show. Check out a photo of the performer and a photo of one of the characters they will play.

Sam Be



Cleaner



John Daverne



Sun



Chris To'oala



Lucy the Cow



Nat Churches



Jim the Eagle



Tom Webster



Magician



Audience Host and Scene Guide



Sammy Ellwood is the Scene Guide. Before the show, she'll be helping the audience. During the show, she will sit on stage next to the Scene List, helping you know what's going to happen in the play.

Stage Manager



Katie Querin is the Stage Manager. She will lead the pre-show introduction before the show, to introduce the lighting, set, actors, and surprises in the show. She will be backstage during the show.